

# SNOHOMISH COUNTY OIL SPILL PREPAREDNESS/RESPONSE PROJECT

UW Environmental  
Management Team

**Andrea Kunz**

Sara Booth

Tom Carter

Vivien Savath

UW Faculty Advisor

Robert Pavia



SNOHOMISH COUNTY MARINE RESOURCES ADVISORY COMMITTEE  
Project Sponsor: **Kathleen Herrmann**



# Our Mission

- Inform Snohomish County government about marine oil spill threat
- Identify and develop prevention and preparedness options



# Why This Project?

- The importance of local involvement and policy awareness
- The real threat of spills in Snohomish County
- Requested by Snohomish County Council



# Logistics

- \$7000 Application Fee Paid for by Surface Water Management (SWM)
- Approved by Director of SWM and Union
- Worked with UW Coordinator to locate a Faculty Advisor- Bob Pavia
- Internal Presentations to SWM & MRC
- Project Team Meetings



# Project Objectives

- Present foundational research
- Choose and model oil spill scenarios
- Analyze gaps and present options
- Evaluate options and suggest next steps



# Applicability for other MRCs:

- Federal and state laws are the same
- Recommendations can be applied to all Counties
- Report reviewed by People for Puget Sound Policy Advisor- Rein Attemann
- Many interviews conducted with regional oil spill experts beyond Snohomish County
- TAP model is free and available online

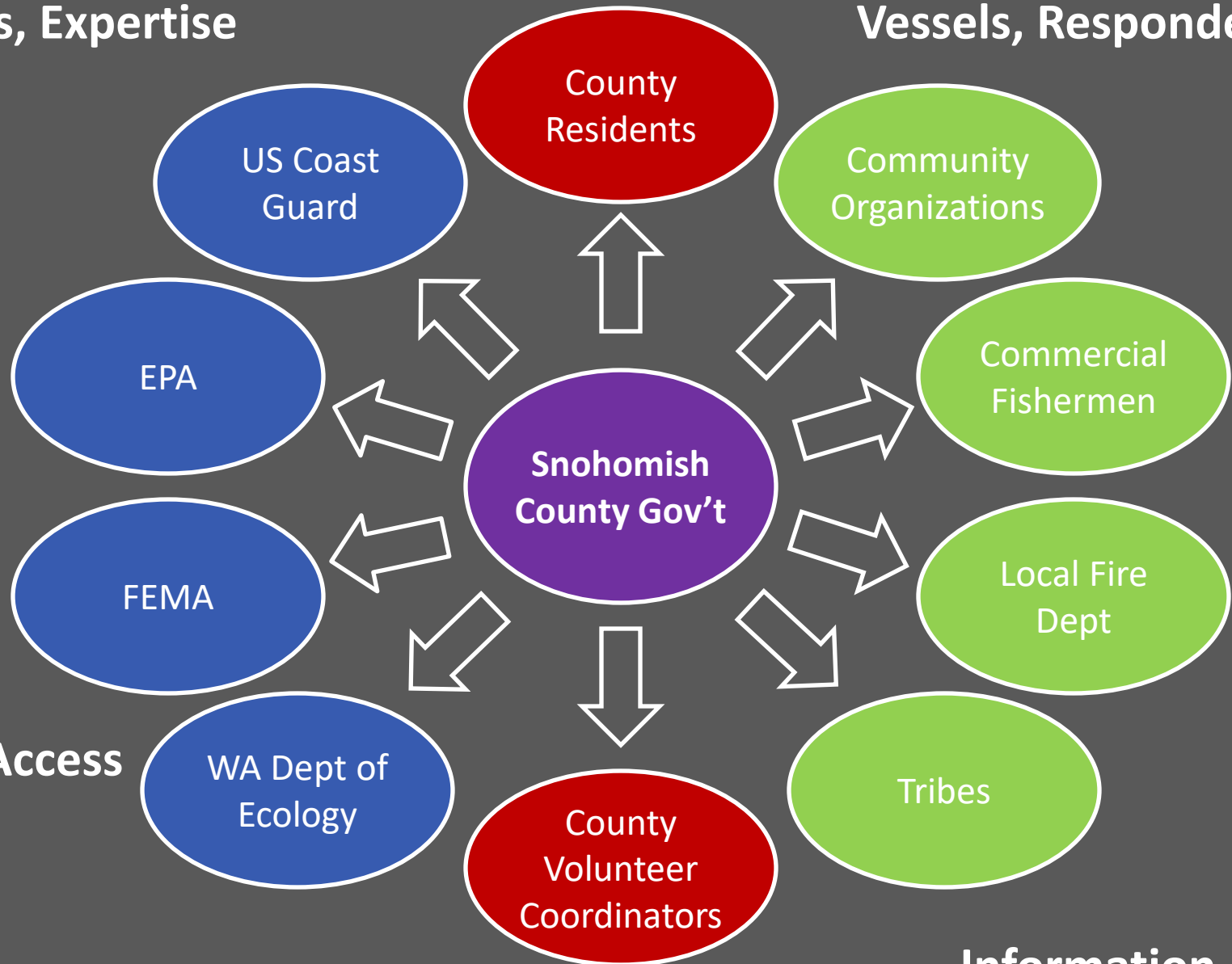
## Funds, Expertise

## Vessels, Responders

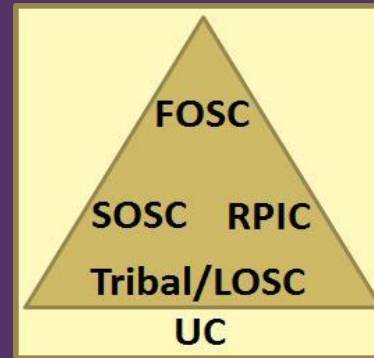
## Local Access

## Volunteers

## Information



# Foundational Research



- Resources At Risk
- Potential Threat Sources
- Legislative and Organizational Environment





# Threat Scenarios

## Tanker Spill



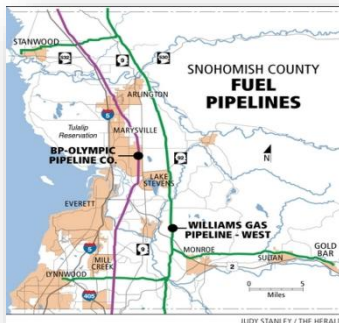
## Cargo Vessel Spill



## Barge Aground



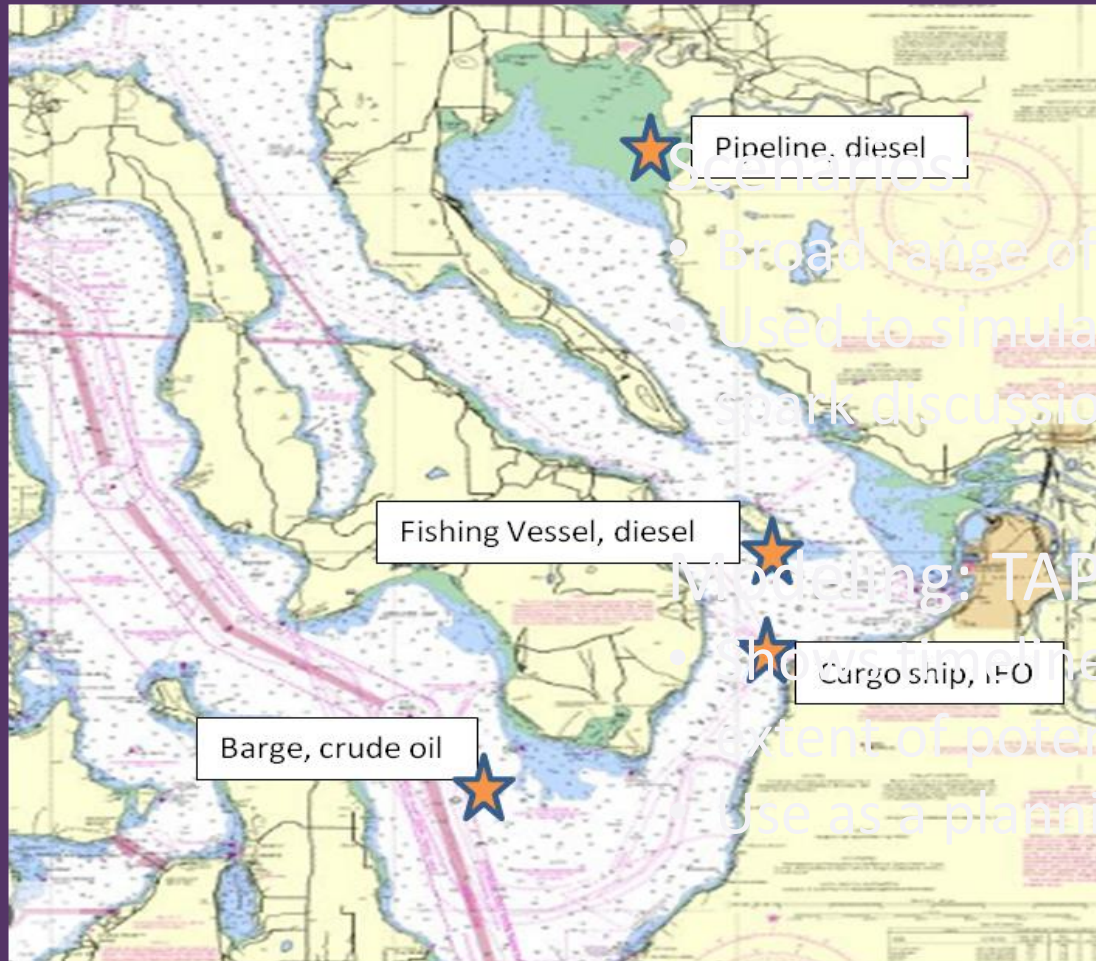
## Pipeline Spill



## Fishing Vessel Sinking



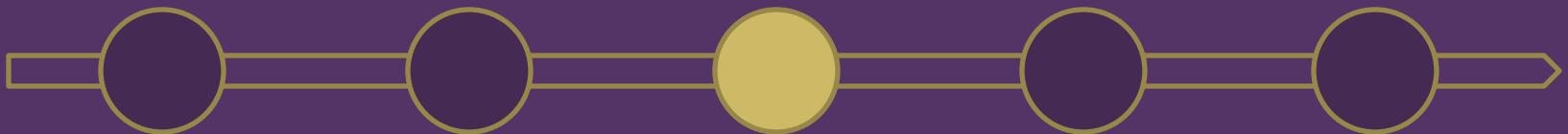
# Scenarios



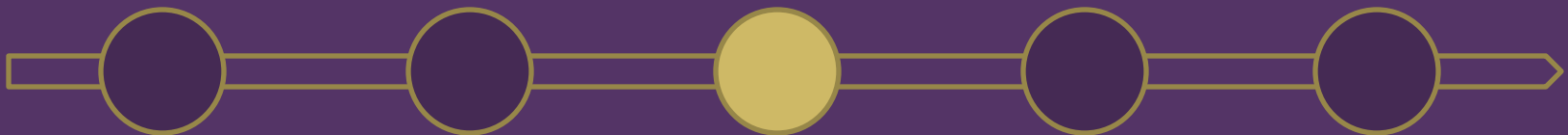
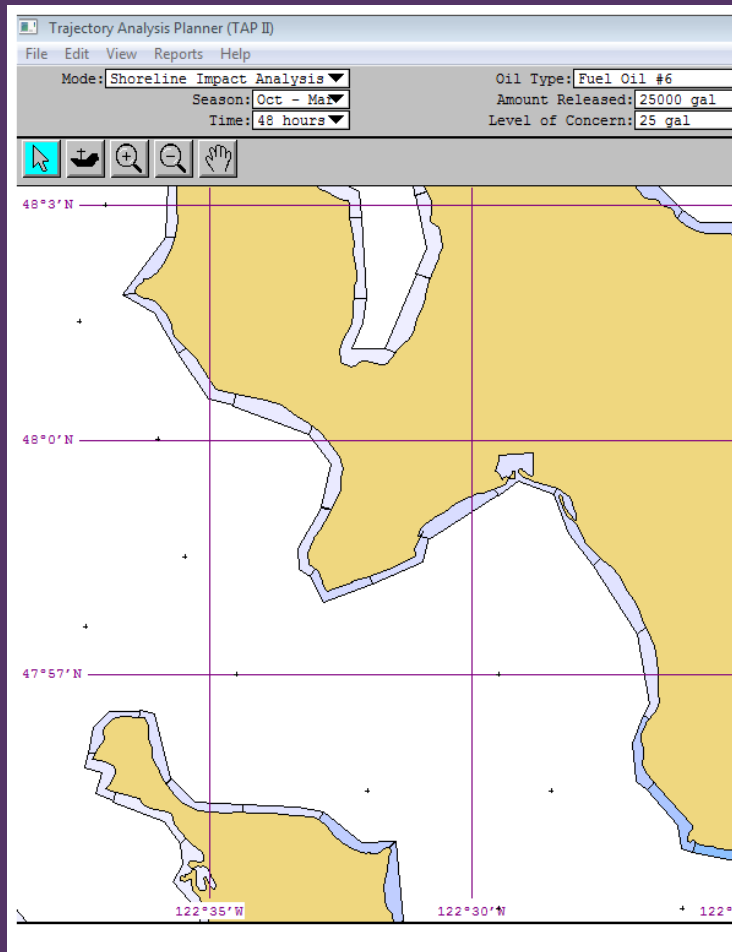
- Broad range of factors
- Used to simulate threats, spark discussion

Modeling: TAP

- Model pipeline and extent of potential spill
- Use as a planning tool



# Scenarios



# Gap Analysis

## Identified Gaps:

- Participation in Planning Process
- Communication
- Local Knowledge
- Volunteer Utilization



# Options

	Volunteer Utilization	Local Knowledge	Communication	Participation
Pre-identify Volunteer Roles	X			
Maintain List of Contacts			X	
Tabletop Exercises	X	X	X	X
Sign up for the GRP listserv				X
Coordinate Community input to GRP/NWACP		X		X
...				



- Fully within County's capacity
- County has partial capacity to implement
- Beyond County's capacity

	CAPACITY				
	Authority	Resources Required	Frameworks	Independence	Avoids Duplication of Effort
Pre-identify Volunteer Roles	Fully within County's capacity	County has partial capacity to implement	Fully within County's capacity	Beyond County's capacity	Fully within County's capacity
Maintain list of contacts	Fully within County's capacity	Fully within County's capacity	Fully within County's capacity	Fully within County's capacity	County has partial capacity to implement
Tabletop exercises	Fully within County's capacity	County has partial capacity to implement	Fully within County's capacity	County has partial capacity to implement	Beyond County's capacity
Sign up for the GRP list serv	Fully within County's capacity	Fully within County's capacity	Fully within County's capacity	Fully within County's capacity	Fully within County's capacity
Coordinate community input to GRP/NWACP	Fully within County's capacity	County has partial capacity to implement	Fully within County's capacity	County has partial capacity to implement	Fully within County's capacity

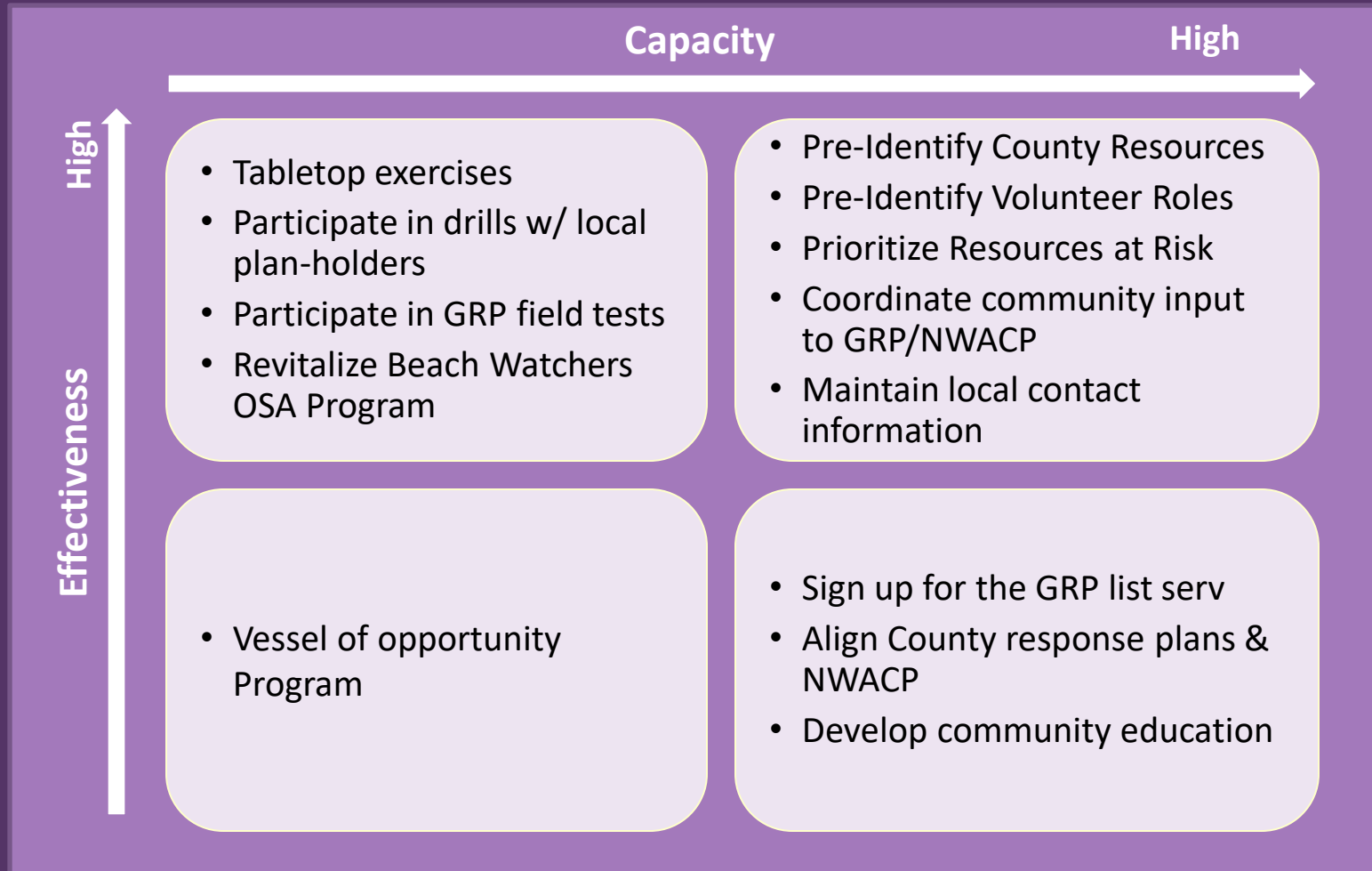


- improves planning/response effectiveness
- moderately improves effectiveness
- has no effect in this category

	EFFECTIVENESS				
	Community Engagement	Communication Flows	Increase Trust (w agencies)	Increase Influence	Community Knowledge
Pre-identify Volunteer Roles	■	■	■	■	■
Maintain list of contacts	■	■	■	■	■
Tabletop exercises	■	■	■	■	■
Sign up for the GRP list serv	■	■	■	■	■
Coordinate community input to GRP/NWACP	■	■	■	■	■



# Recommendations





# Next Steps

- Revise options and criteria as needed
- Identify areas for further research
- Reach out to partner organizations (NWSC, DOE, Coast Guard) and in-County expertise for strategy development



Thank You

	CAPACITY					EFFECTIVENESS				
	Authority	Resources Required	Frameworks	Independence	Avoids Duplication of Effort	Community Engagement	Communication Flows	Increase Trust (w agencies)	Increase Influence	Community Knowledge
Status Quo	Green	Green	Green	Green	Green	Grey	Grey	Grey	Grey	Grey
Pre-identify County Resources	Green	Yellow	Green	Green	Green	Green	Green	Grey	Green	Green
Pre-identify Volunteer Roles	Green	Yellow	Green	Red	Green	Green	Grey	Green	Green	Grey
Prioritize Resources at Risk	Green	Yellow	Green	Yellow	Green	Yellow	Green	Grey	Green	Green
Maintain list of contacts	Green	Green	Green	Green	Yellow	Yellow	Green	Grey	Grey	Grey
Tabletop exercises	Green	Yellow	Green	Yellow	Red	Yellow	Green	Green	Green	Green
Participate in drills w/ local plan-holders	Yellow	Yellow	Green	Red	Red	Yellow	Green	Green	Grey	Grey
Sign up for the GRP list serv	Green	Green	Green	Green	Green	Grey	Yellow	Grey	Grey	Yellow
Request and Participate in GRP field tests	Yellow	Yellow	Green	Red	Green	Yellow	Green	Green	Green	Green
Coordinate community input to GRP/NWACP	Green	Yellow	Green	Yellow	Green	Green	Green	Green	Green	Green
Ensure alignment between County response plans & NWACP	Yellow	Green	Green	Yellow	Green	Grey	Green	Green	Grey	Grey
Develop community education	Green	Yellow	Green	Yellow	Green	Green	Grey	Grey	Grey	Green
Revitalize Beach Watchers OSA Program	Yellow	Red	Green	Red	Green	Green	Green	Grey	Grey	Green
County Vessel of Opportunity Program	Yellow	Red	Yellow	Red	Red	Green	Grey	Grey	Grey	Yellow

	Volunteer Utilization	Local Knowledge	Communication	Participation
Status quo				
Pre-identify County Resources	X	X		
Pre-identify Volunteer Roles	X			
Prioritize Resources at Risk		X		
Maintain List of Contacts			X	
Tabletop Exercises	X	X	X	X
Participate in Drills with Local Plan-Holders		X	X	
Sign up for the GRP listserv				X
Request & Participate in GRP field tests		X	X	X
Coordinate Community input to GRP /NWACP		X		X
Align County response plans & NWACP			X	X
Develop Community Education			X	
Revitalize Beach Watchers OSA Program	X	X		
County Vessel of Opportunity Program		X		