

# Snohomish County Oil Spill Preparedness and Response

A large oil spill in County waters could significantly damage important environmental and economic resources. Past spills in Puget Sound and elsewhere demonstrate that proactive pre-spill measures undertaken by local governments can reduce the impacts of these spills. The options presented in this flyer can help ensure that the County and responders have the information and support they need to effectively manage a spill.

## What is at stake?



Edmonds Underwater Park



Port Susan Bay Preserve



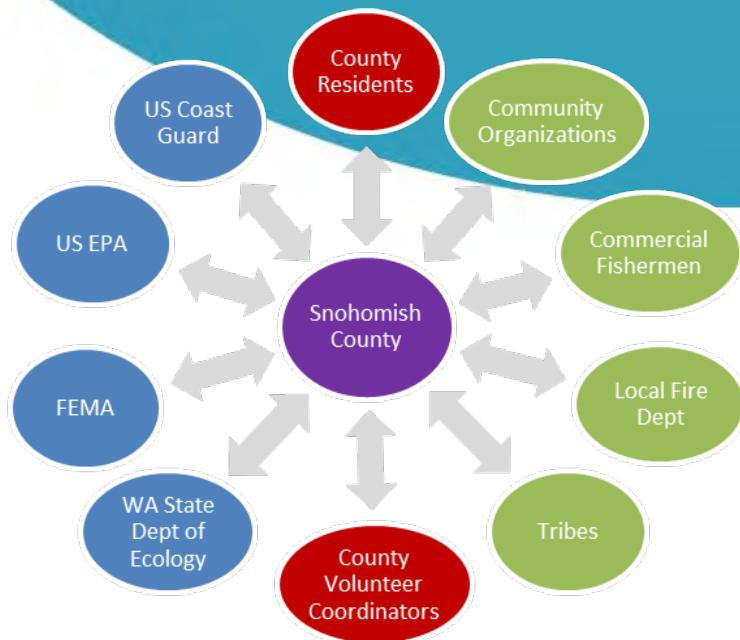
Mission Beach

## What is the County's role during a spill?

As the bridge between Federal and State responders and local residents, the County will occupy a key role in the response. A successful response will depend on the County's ability to effectively communicate and coordinate among stakeholders, helping ensure efficient and effective use of resources and information.

## What are the potential threats for oil spills in Snohomish County?

- Olympic Pipeline
- Naval vessels
- Fishing vessels
- Tugs and Barges
- Marinas and ports
- BNSF railroad
- Oil tankers
- Cargo vessels



- Seeking Local Information;  
Can Provide Resources and Funds
- Seeking Information;  
Can Provide Vessels/Responders
- Seeking Information;  
Can Provide Volunteers

## What gaps exist in current Oil Spill Preparedness Plans?

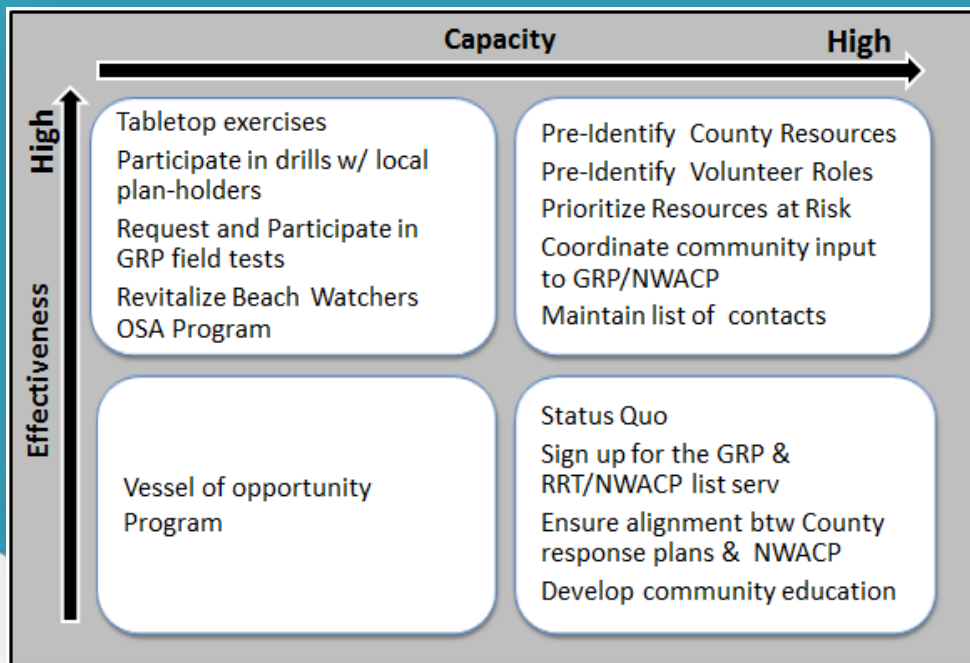
The following gaps were identified by the University of Washington Keystone Team:

- Participation in Planning Process
- Use of Local Knowledge
- Communication
- Volunteer Utilization

## How can the County fill these gaps and increase preparedness?

The County can implement a combination of the 14 options presented in the matrix below.

Options are ranked according to Capacity and Effectiveness.



## What is the Next Step?

The next step for the County is to review the options presented and re-evaluate their capacity and effectiveness based on current County resources and priorities. The County might also want to consider the ability of the options to be integrated into existing efforts and reach out to local partners such as the Coast Guard and the Department of Ecology to develop a strategy. By implementing selected options, the County will be taking important steps to enhance local spill preparedness and response.