

Comprehensive Review of the Port Susan MSA Conservation Action Plan

Grace Adams, Madison Rose Bristol, Michael Cervantes, Tiffany Ha, and Tori Shaw

June 2022



Presentation Overview

1. Introduction

2. Research Questions

3. Methods

4. Findings

5. Recommendations

Followed by 15 minutes for questions

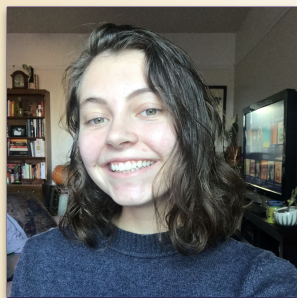
Project Team



EVANS SCHOOL
OF PUBLIC POLICY & GOVERNANCE
UNIVERSITY of WASHINGTON

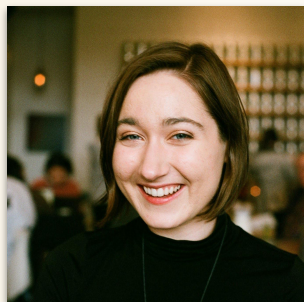


SCHOOL OF
Marine & Environmental Affairs
College of the Environment • University of Washington



Grace Adams
she/her

Nature based solutions
Coastal management
Community-led
stewardship



Madison Rose Bristol
they/she

Climate resilience
Indigenous sovereignty
Environmental justice



Michael Cervantes
he/him

Climate resilience
Indigenous sovereignty
Organizational
Sustainability



Tiffany Ha
she/her

Environmental justice
Accessible sustainability
Climate resilience



Tori Shaw
she/her

Community-based resource
management
Environmental justice
Continuous improvement

Introduction

Research
Questions

Methods

Findings

Recommendations

Research Questions

1. Updating Knowledge

- a.) Based on updated scientific information, how have the **viability** and **threat rankings** for each conservation target outlined in the CAP changed over the past 10 years?
- b.) What are the **relevant regional policies** and **environmental justice considerations** that should be included in a CAP review, update, or alternate process?

2. Effectiveness

- a.) What **best practices** should the MRCs and relevant partners take to **effectively steward** the Port Susan MSA?

3. Community Engagement

- a.) What **community engagement tools** would be most effective in communicating the successes and challenges of the CAP and eliciting relevant feedback/suggestions for continued conservation and restoration efforts in Port Susan?

Methodology: Literature Review

*Compile +
analyze
scientific
literature*

Conservation Targets

Beaches, Chinook Salmon,
Dungeness Crab, Embedded
Invertebrates, Forage Fish,
River Delta, Shorebirds

*Review
updated
policy and
regulatory
guidelines*

*Explore
related local
initiatives &
alternative
approaches*

Methodology: Survey & Interview

- Surveys
 - Provided feedback and recommended additional questions
 - 35 responses from regional stakeholders and partners, most were involved in 2012 CAP
- Interviews
 - Facilitated / supported 4 out of 9 interviews
- Limitations
 - Many respondents were selected based on previous involvement by MRCs and ESA



SURVEY FINDINGS

Utility

- Making a shorter version of the report
- Creating more concrete and actionable steps
- Meeting more regularly with partners
- Linking efforts to related local initiatives

Question 15: Areas to Explore, Expand, Update, Add-on



Question 5: Time Since CAP was Last Referenced



Priorities

1. Sea level rise
2. Climate change
3. Nearshore ecology; and
4. Environmental justice issues.

INTERVIEW FINDINGS

Planning Fatigue

- Feasible action plans
- Accountability measures
- Develop a crosswalk process with other programs

Community Engagement

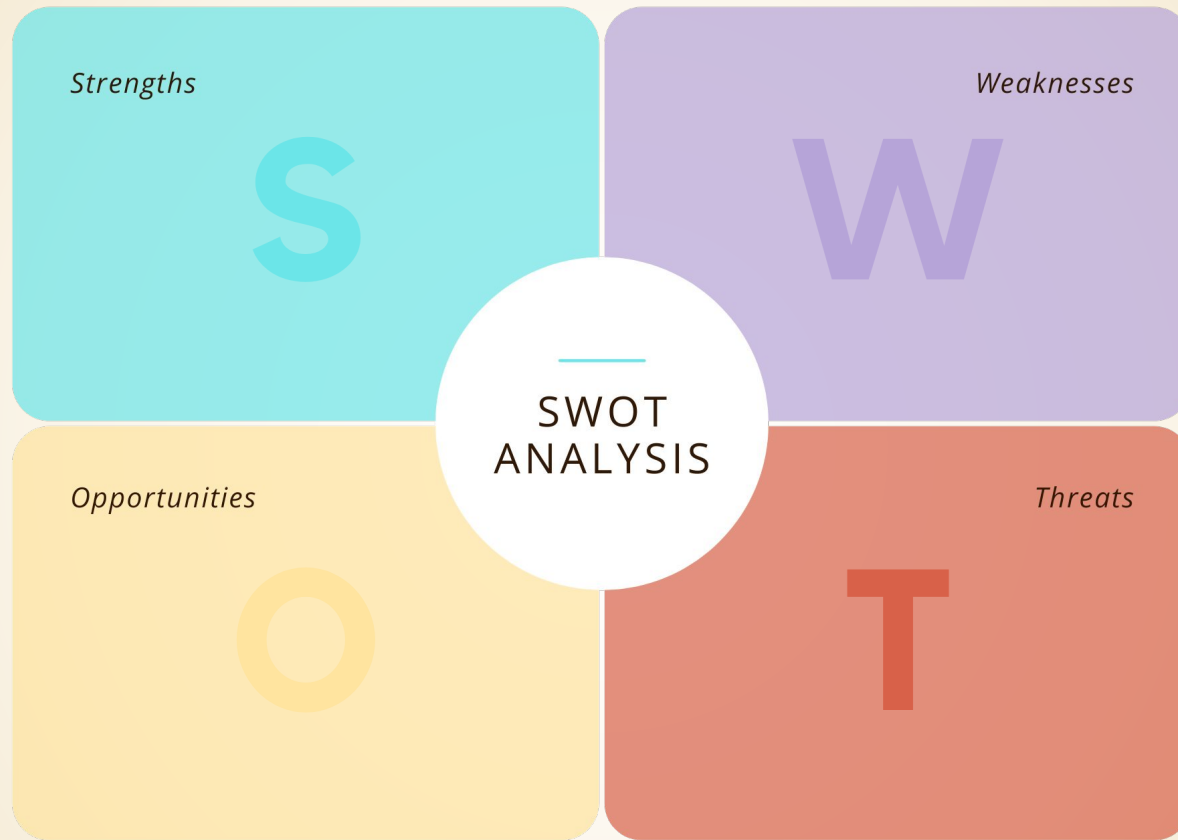
- Emphasis on biological systems and indicators
- Limited the opportunity for sociocultural considerations
 - Lack of community ownership & “buy-in”

Improvement Areas

- Implementation mechanism
- Follow-up procedures
- Clear outcome

Recommended:

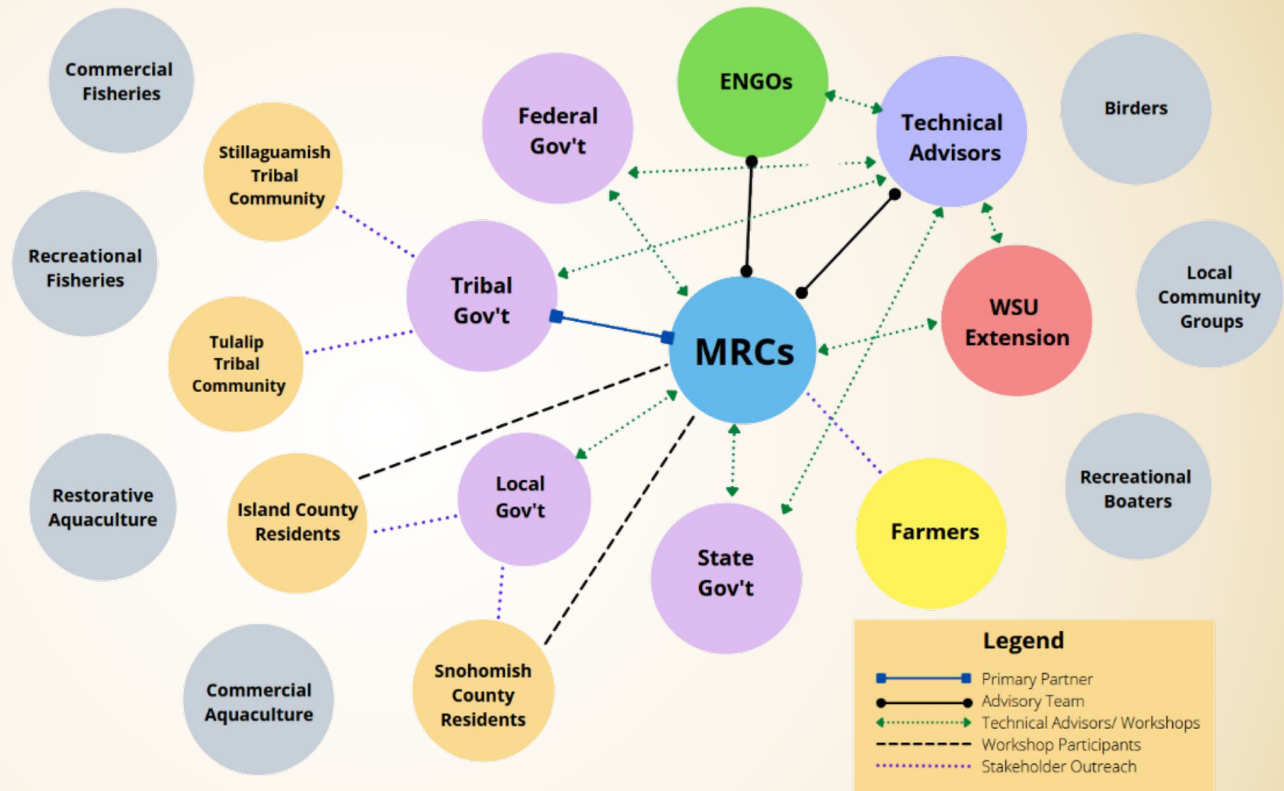
1. Crosswalk process
2. Water quality monitoring
3. Place-based approach
4. Community engagement
5. Relevancy

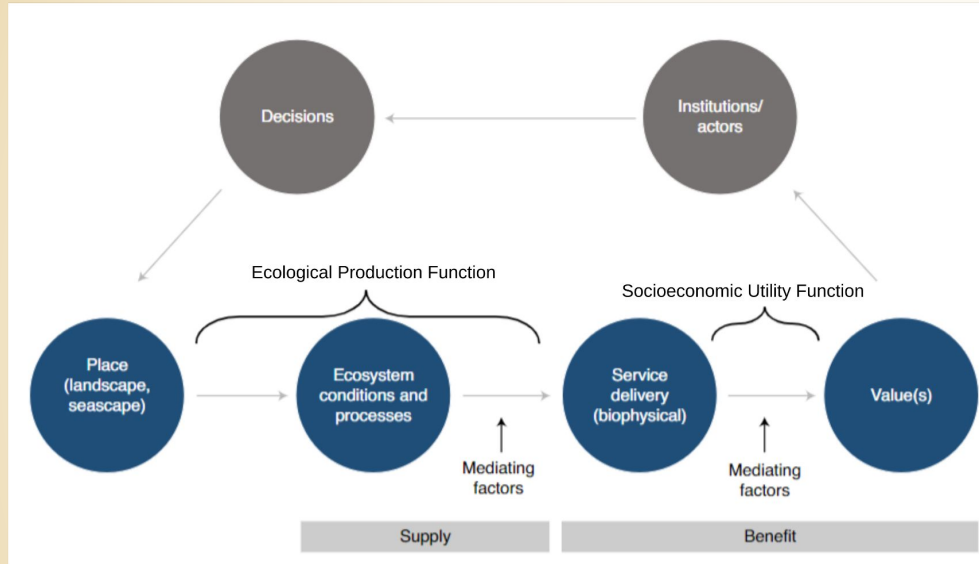


SWOT ANALYSIS

Strengths

- Organizational collaborations





Modified ecosystem services chain model from Mandle et al. 2021

SWOT ANALYSIS

Weaknesses

- Monitoring and evaluating delegated responsibilities
- Limited public engagement
- Relevance and effectiveness of targets



22

Prioritized Actions

68%

15 Actions
Addressing High
Threats

23%

5 Actions Implemented

14%

3 Actions Implemented
Addressing High
Threats

SWOT ANALYSIS

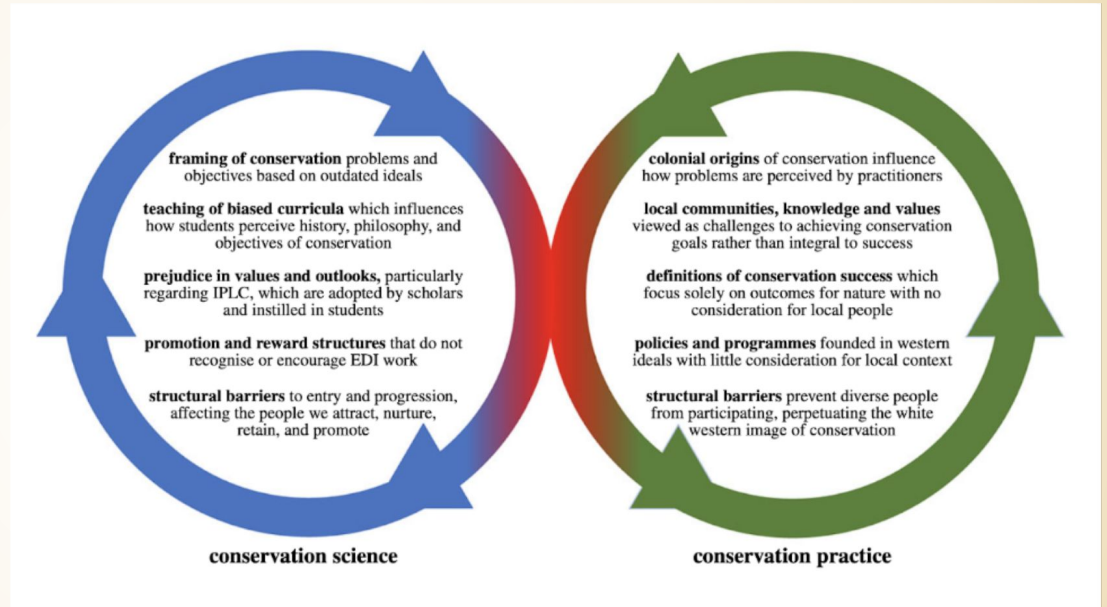
Threats

- Exclusion of sociocultural interests
- “Expert” knowledge
- Discontinuity between threats & proposed actions

SWOT ANALYSIS

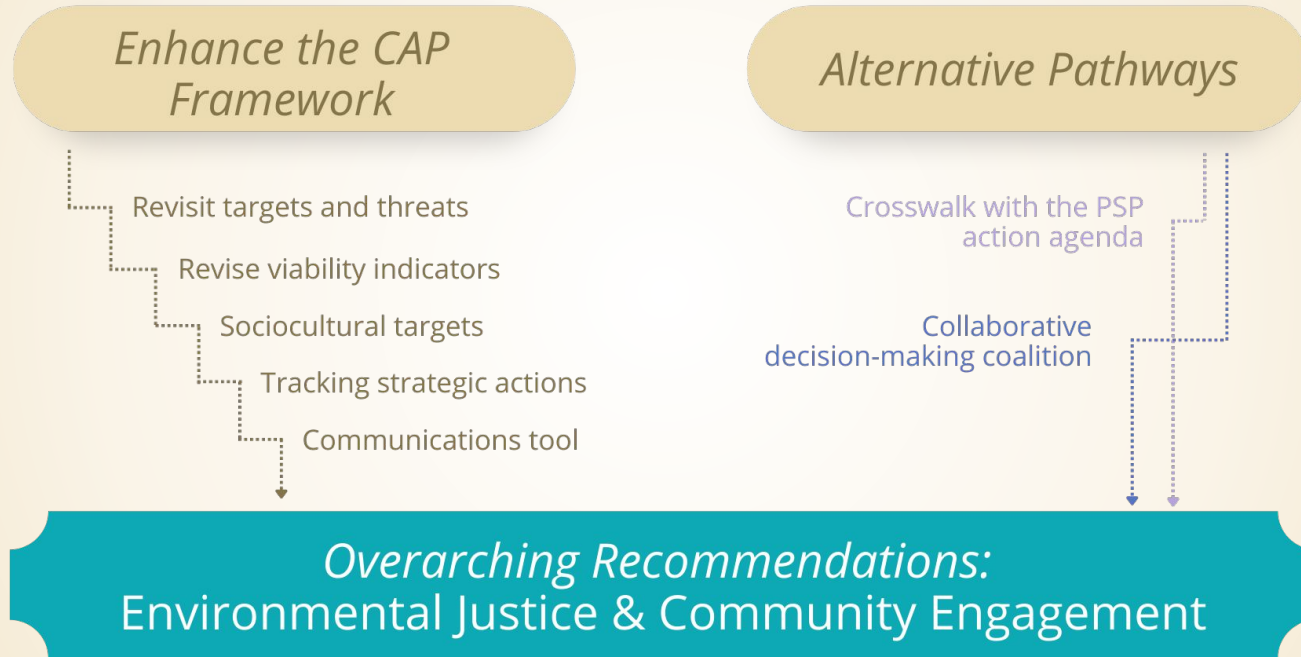
Opportunities

- Equitable and just stewardship practices
- Incorporating local and traditional knowledge
- Building authentic partnerships with BIPOC and low-income communities



Rudd et al. 2021. *Overcoming racism in the twin spheres of conservation science and practice*

Recommendations



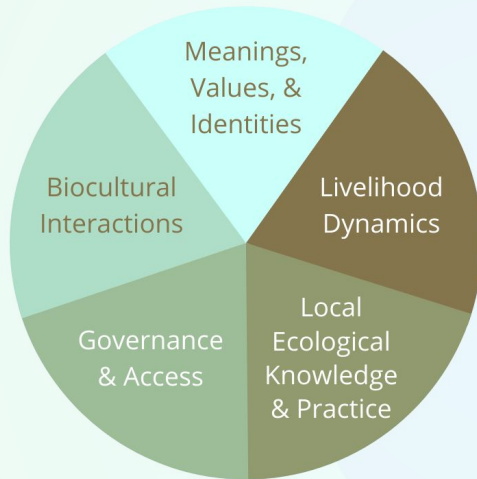
Incorporating New Information

New & Relevant Information	Existing Efforts	Improving Understanding
<ul style="list-style-type: none">• SLR projections in Island County Hazard Mitigation Plan• WDNR 2015 sand shrimp population assessment• Pacific Northwest Crab Research Group larval and population data• Avian Habitat Suitability Models• Food web related viability indicators for Chinook Salmon	<ul style="list-style-type: none">• Snohomish County Sustainable Lands Strategy• 2021 Salish Sea Marine Survival Project• NOAA's Puget Sound juvenile Chinook Salmon carrying capacity database• WDNR's Shore Friendly program• Audubon Society's Puget Sound Conservation Strategy	<ul style="list-style-type: none">• Conduct shoreline permitting compliance evaluation• Coordinate with fisherfolk and WDFW to update forage fish stock assessments• Advocate for real time Dungeness catch data via report card collection• Implement Avian Monitoring Strategy

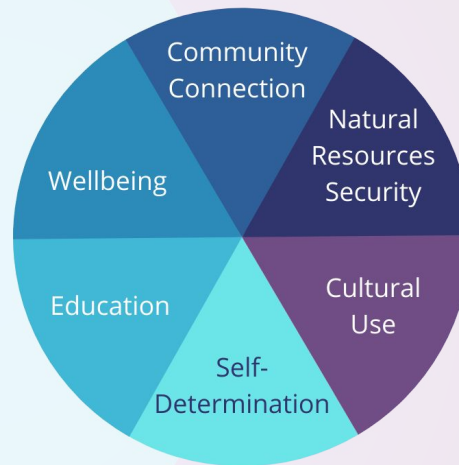
Revising Viability Indicators

Conservation Target	Landscape Context	Rank	Condition	Rank	Size	Rank
Shorebirds						Good
Chinook Salmon		Poor		Fair		Fair
Forage Fish		Good		Good		Good
Embedded Invertebrates						
Dungeness Crab				Good		Good
River Delta		Poor		Poor		Poor
Beaches		Fair		Poor		Good

Integrate Sociocultural Indicators



Poe et al. 2014, *Cultural dimensions of socioecological systems*



Donatuto et al. 2014, *Indigenous Community Health and Climate Change*

Establish Process to Track Progress of Strategic Actions

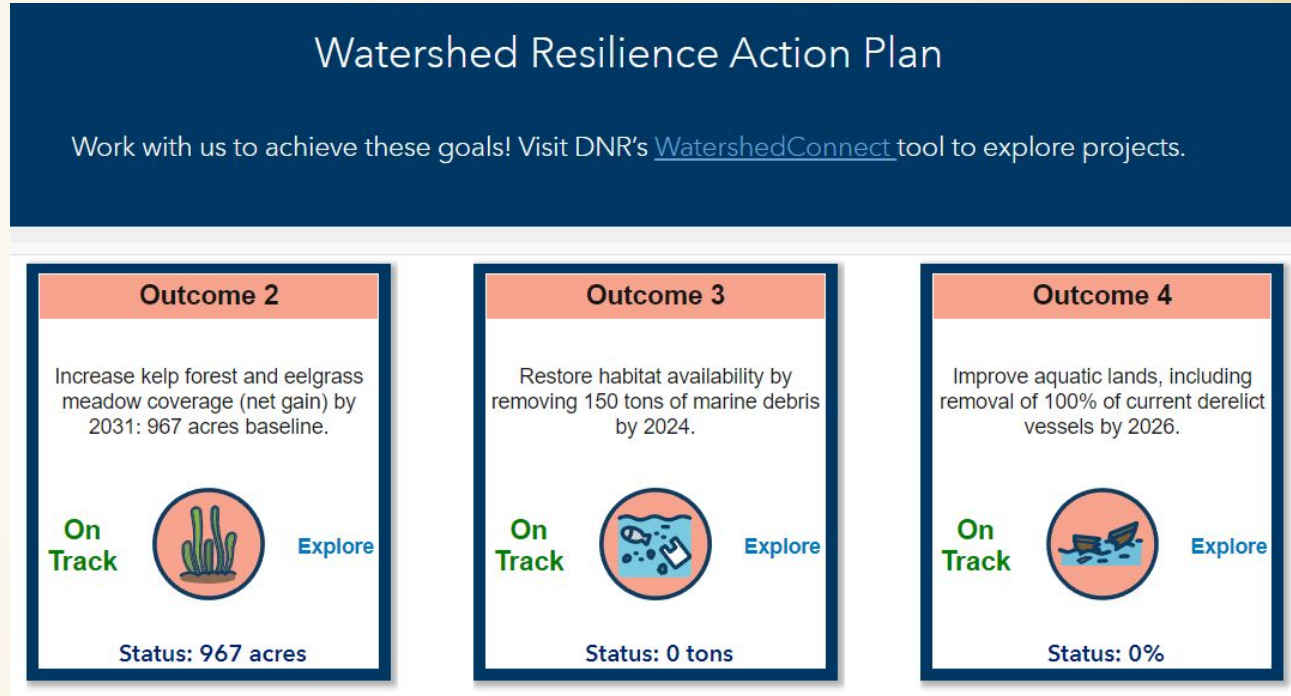
Currently viewing 631 of 631 Near Term Actions [Download Table](#)

1 Near Term Action Name	2 Owner Organization	3 Primary Contact	4 Stage	5 Activity Progress	6 Activity Progress Barrier	7 Implementation Start Year	8 Completion Year
30% Design of Priority Estuary Restoration Projects in the V	Kitsap County	Christina Kereki	Planning/Design	Off-Track	Inadequate resources: Fundir	2020	202
A comprehensive survey of salmon habitat in nearshore are	WA DNR	Bart Christiaen	Implementation	Off-Track	Inadequate resources: Fundir	2018	202
A framework and guidance for sub-tidal habitat monitoring	USGS	Stephen Rubin	Planning/Design	None	None	2020	202
A Guide to Streamside Living	HCSEG	Mendy Harlow	Planning/Design	None	None	2020	202
A Multi-Benefit Restoration of the Lower Duckabush River a	HCSEG	Mendy Harlow	Planning/Design	On-Track	No barrier identified	2020	202
A Regional Outreach Model for Privately Managed Stormwa	Snohomish CD	David Jackson	Planning/Design	On-Track	Inadequate resources: Fundir	2020	202

Puget Sound Partnership- Action Agenda Tracker

Create Communication Tool to Share Key Information

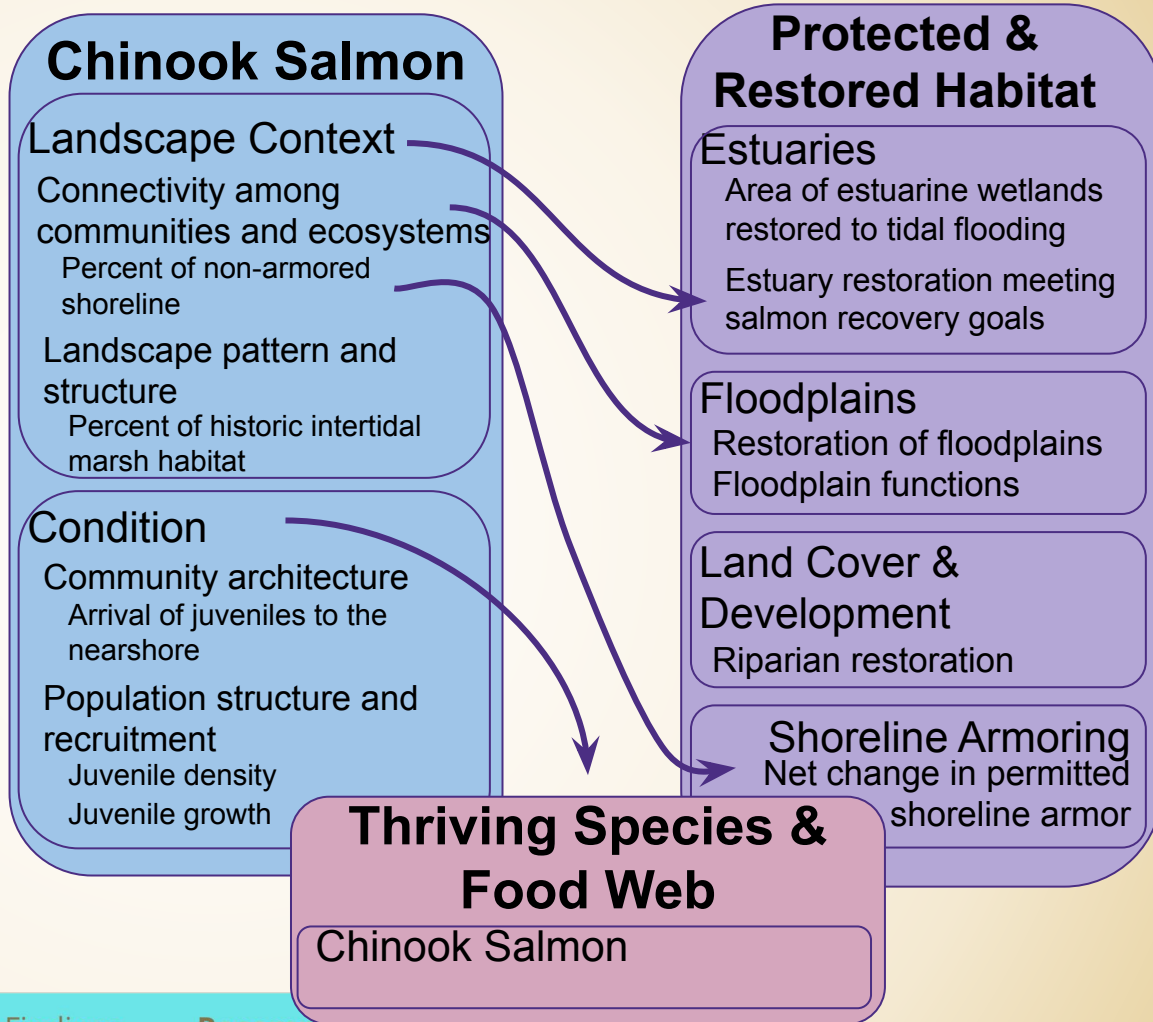
- Transparent & accessible
- Consider purpose & audience
- Inclusive science communication



WDNR Dashboard

Crosswalk with Puget Sound Partnership Action Agenda

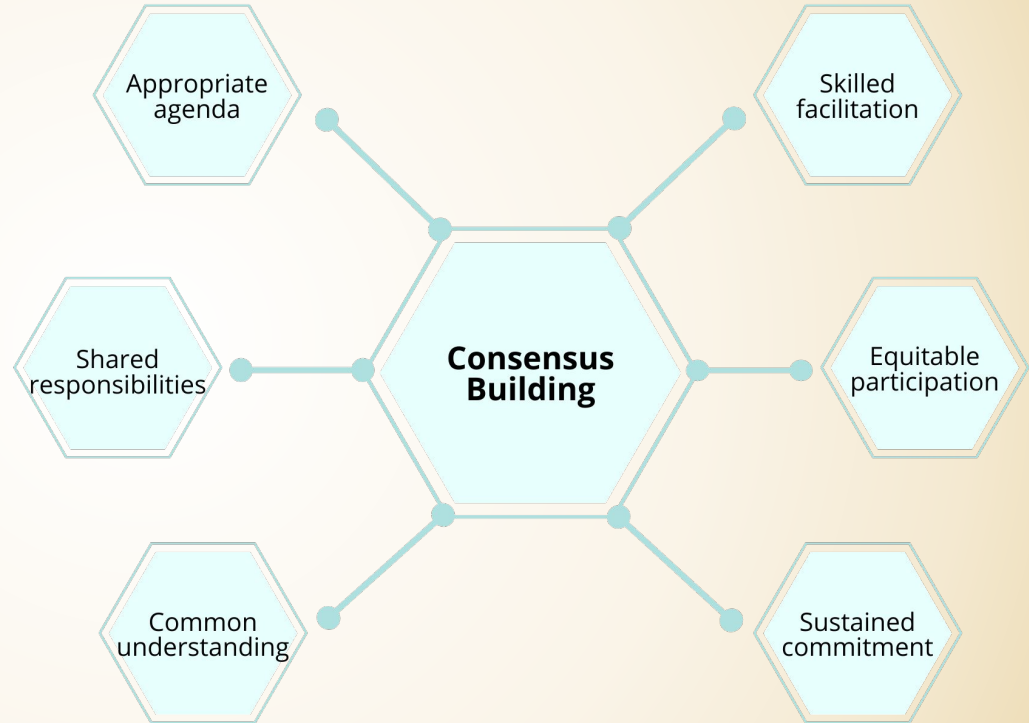
1. Cross examine the 2012 CAP's conservation targets, Vital Signs, and Indicators
2. Cross examine the 2012 CAP and the Action Agenda's Comprehensive Plan
 - a. Long term recovery goals
3. Cross examine the 2012 CAP and the Action Agenda's Implementation Plan
 - a. Short term recovery actions



Develop a Collaborative Decision Making Coalition

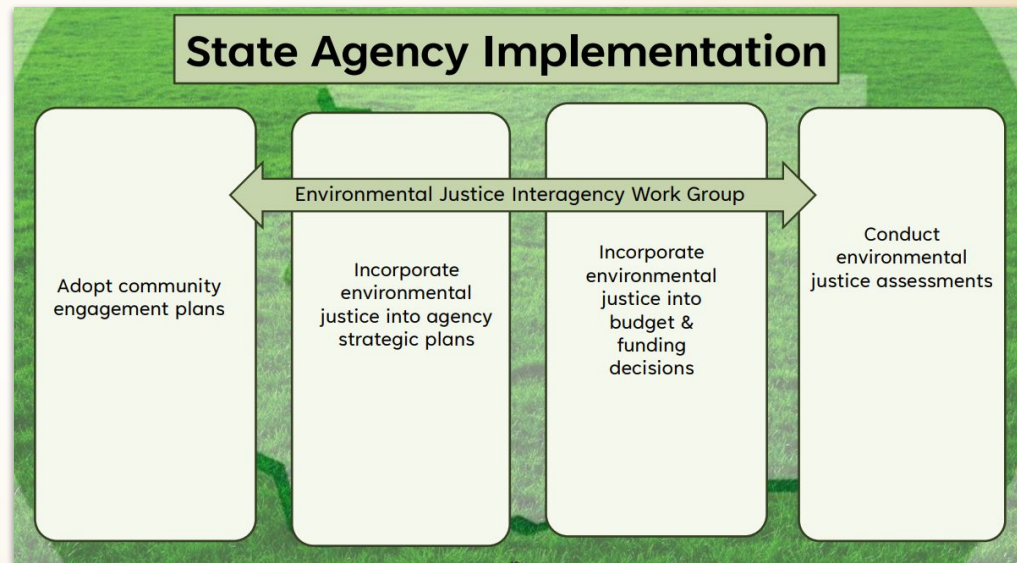
Potential topics to consider:

- Define "community-based"
- Define "stewardship"
- Determine which socio-cultural indicators to incorporate
- Draft collective vision on a healthy, equitable, and sustainable MSA
- Responsibilities and measures of accountability for implementation
- Plan for monitoring and evaluation



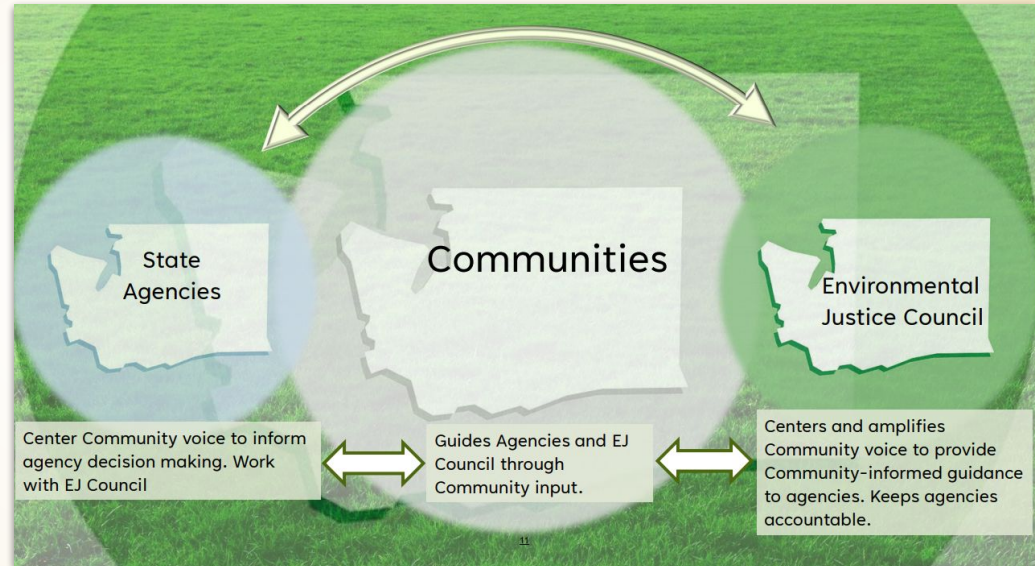
Join the WA State Environmental Justice Council (EJC) Interagency Workgroup

- Healthy Environment for All (HEAL) Act of 2021
- EJC mandated to advise environmental agencies “on incorporating environmental justice into agency activities”
- Several MRC partners involved
- Join in a “listen and learn” capacity
 - Attend monthly meetings
 - Submit public comments
 - Review publications
 - Collaborate on implementation



Review and incorporate guidelines from the EJC's Equitable Community Engagement Plan

- July 2022 publication
- Will define best practices for equitable community engagement
 - Includes tribal engagement guidelines
- Integrate into stakeholder meetings and Phase II
- Collaborate with partners to implement best practices across organizational boundaries



Plan for Equitable & Meaningful Community Engagement

CONSIDER

- Community analysis - who's missing?
- Community referrals
- Local knowledge-building workshops
- Place-based relationships, use of natural resources, goals and visions for Port Susan MSA

GUIDING QUESTIONS

- Who was involved in planning, are they the ones impacted by conservation and stewardship issues?
- Potential unintended consequences?
- Communities historically & systematically excluded?
- Inequitable patterns in levels of interaction?

Thank you!



**EVANS SCHOOL
OF PUBLIC POLICY & GOVERNANCE**

UNIVERSITY *of* WASHINGTON



Snohomish County
Marine Resources
Committee

